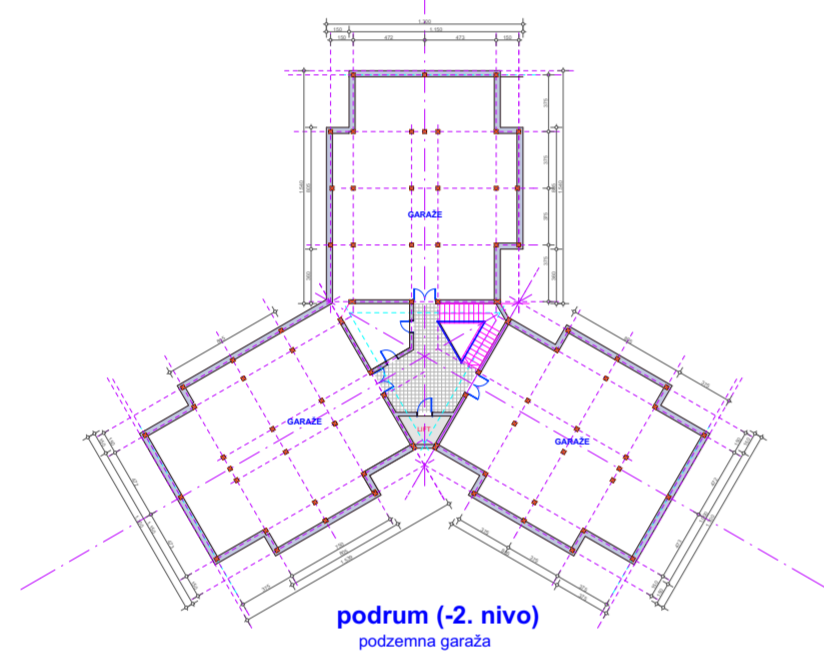
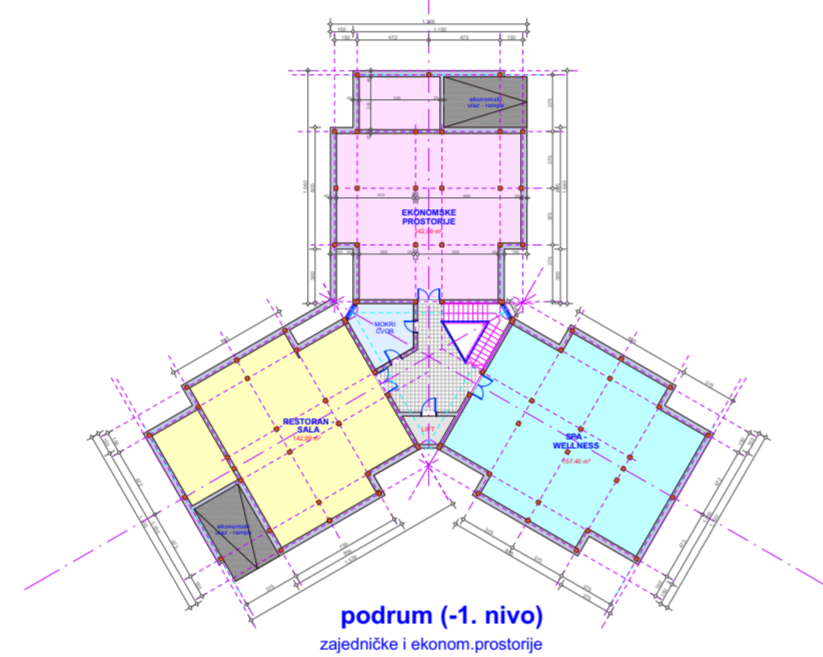


OBJEKAT "J-3" (4-4-4) - JELKICA (P+3)

OBJEKAT "J-3" - JELKICA (P+3)



OBJEKAT "J-3" - JELKICA (P+3)

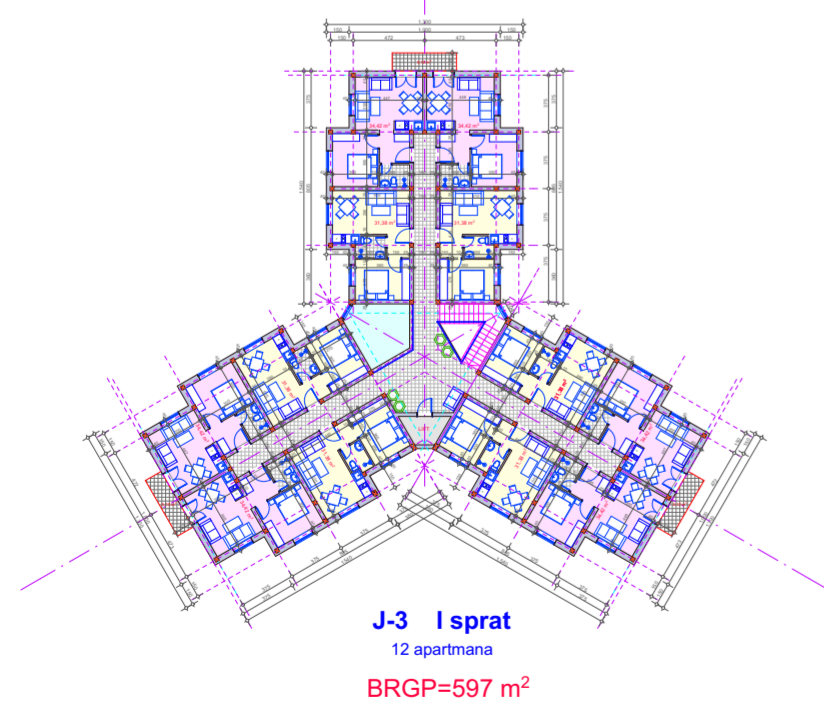


OBJEKAT "J-3" - JELKICA (P+3)

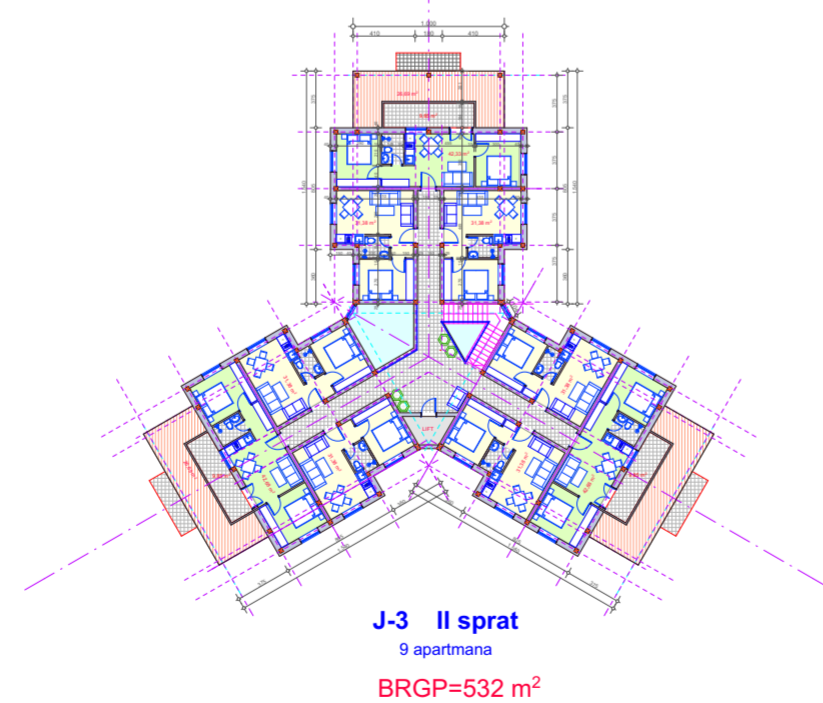


BILANS POVRŠINA: OBJEKAT "J-3" - JELKICA (P+3)			
ETAŽA:	POVRŠINA:	BR. APARTMANA:	BR. LEŽAJEVA:
1) podrum (-2. nivo)	(BRGP =597 m ²)	/	/
2) podrum (-1. nivo)	(BRGP =597 m ²)	/	/
3) prizemlje	BRGP=623 m ²	12 apartmana	24 ležaja
4) I sprat	BRGP=597 m ²	12 apartmana	24 ležaja
5) II sprat	BRGP=532 m ²	9 apartmana	24 ležaja
6) III sprat	BRGP=372 m ²	6 duplex apart.	24 ležaja
7) galerija	BRGP=220 m ²		
UKUPNO:	BRGP=2 344 m ²	39 apartmana	96 ležajeva

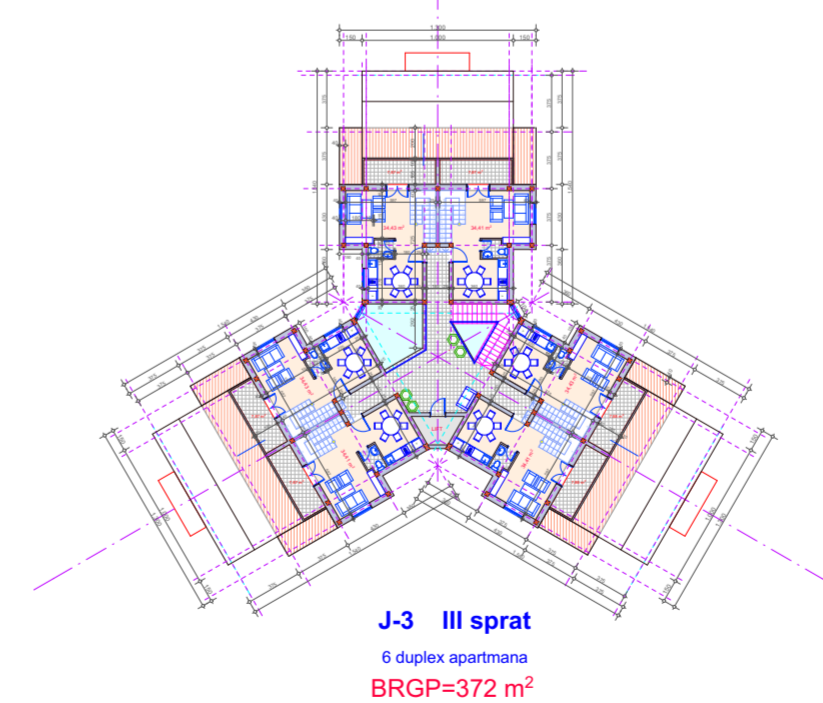
OBJEKAT "J-3" - JELKICA (P+3)



OBJEKAT "J-3" - JELKICA (P+3)



OBJEKAT "J-3" - JELKICA (P+3)



OBJEKAT "J-3" - JELKICA (P+3)

