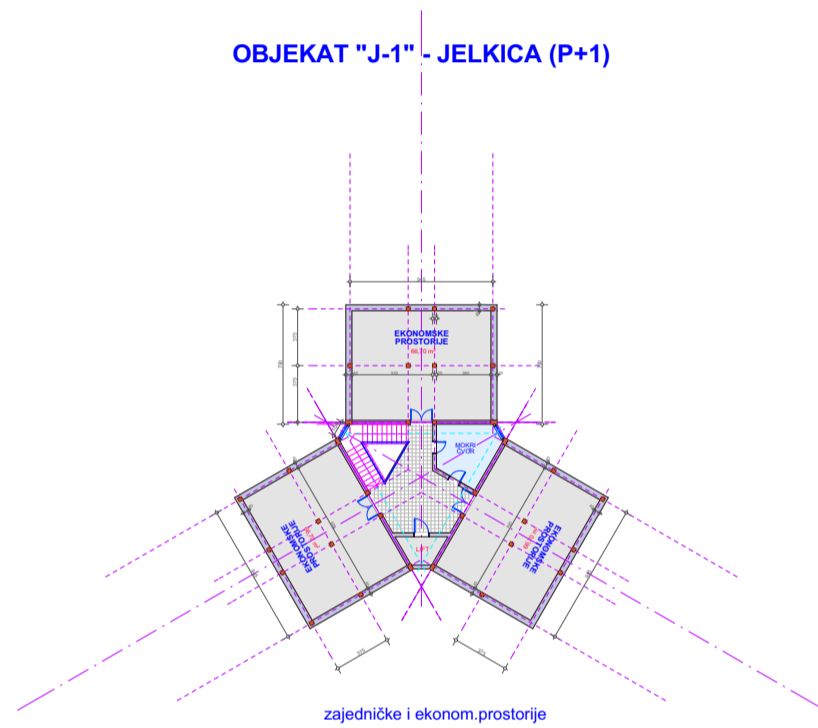
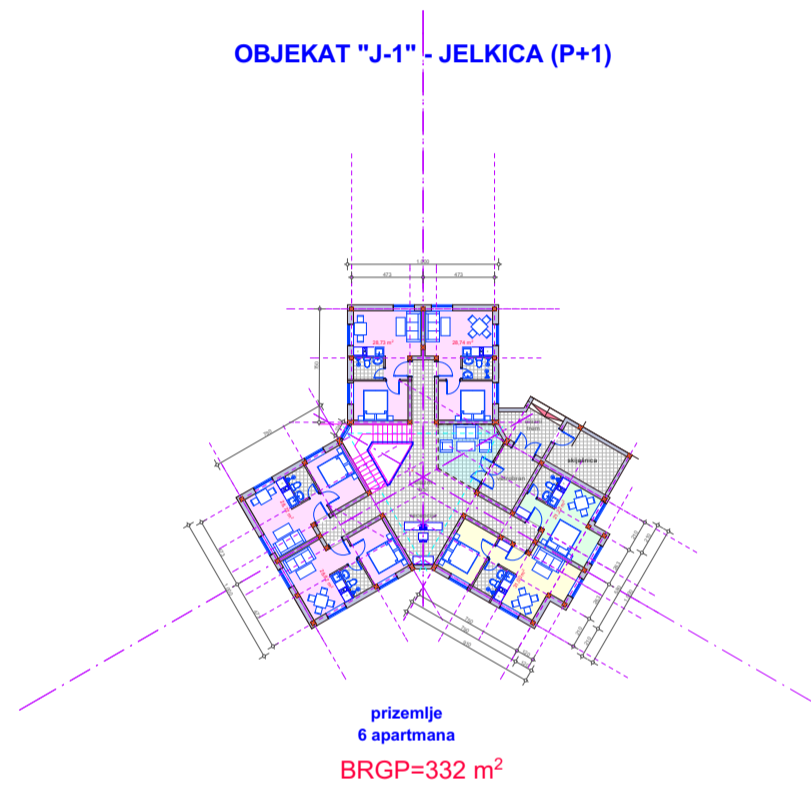


## OBJEKAT "J-1" (2-2-2) - JELKICA (P+1)

OBJEKAT "J-1" - JELKICA (P+1)



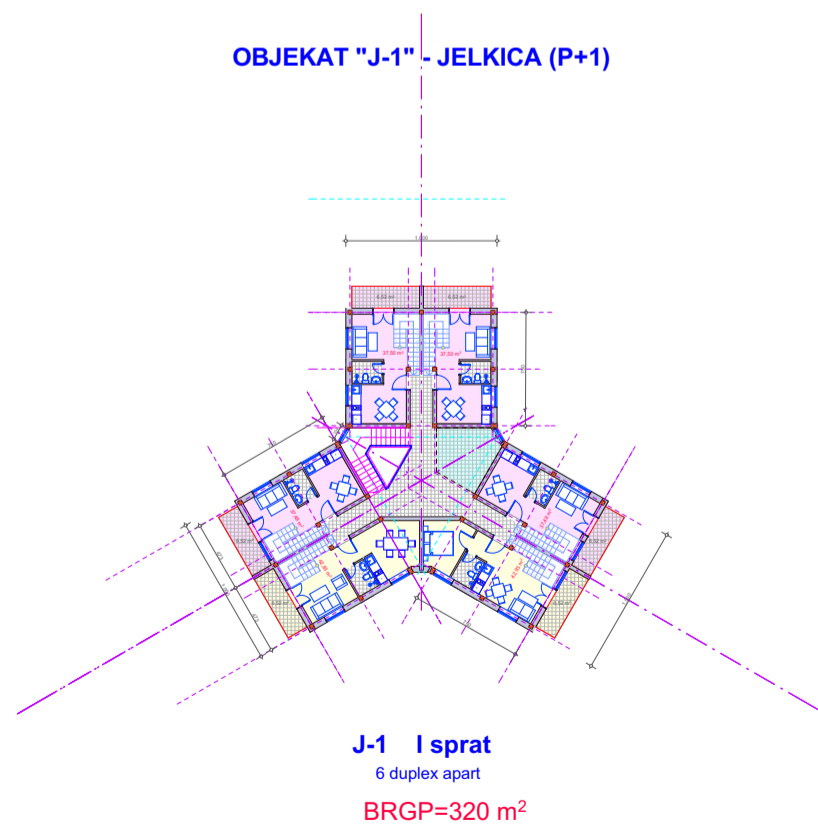
OBJEKAT "J-1" - JELKICA (P+1)



BILANS POVRŠINA: OBJEKAT "J-1" - JELKICA (P+1)			
ETAŽA:	POVRŠINA:	BR. APARTMANA:	BR.LEŽAJEVA:
1) podrum (-1. nivo)	(BRGP =597 m <sup>2</sup> )	/	/
2) prizemlje	BRGP=332 m <sup>2</sup>	6 apartmana	12 ležaja
3) I sprat	BRGP=320 m <sup>2</sup>	6 duplex apart.	24 ležaja
4) galerija	BRGP=170 m <sup>2</sup>		
UKUPNO:	BRGP=822 m <sup>2</sup>	12apartmana	36 ležajeva

**UKUPNO: 1 objekat J-1**

OBJEKAT "J-1" - JELKICA (P+1)



OBJEKAT "J-1" - JELKICA (P+1)

