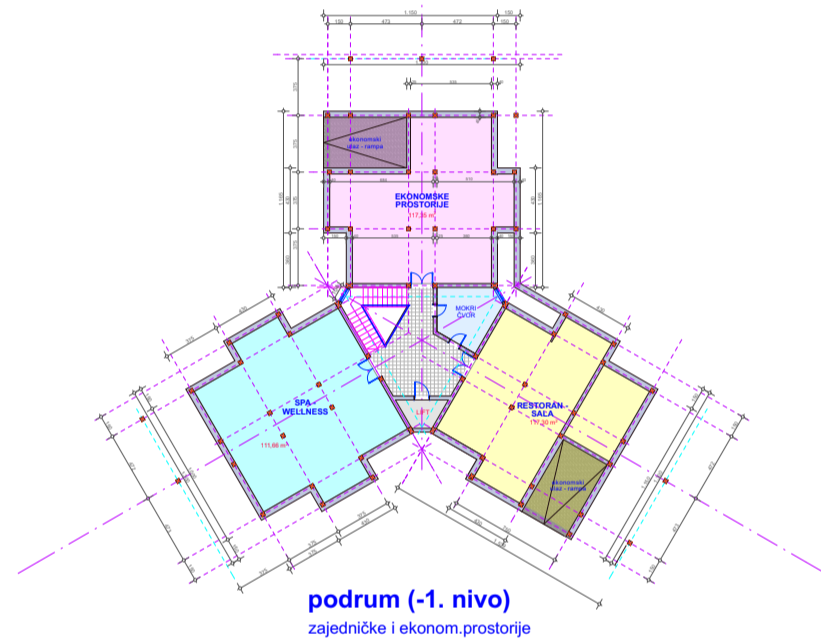




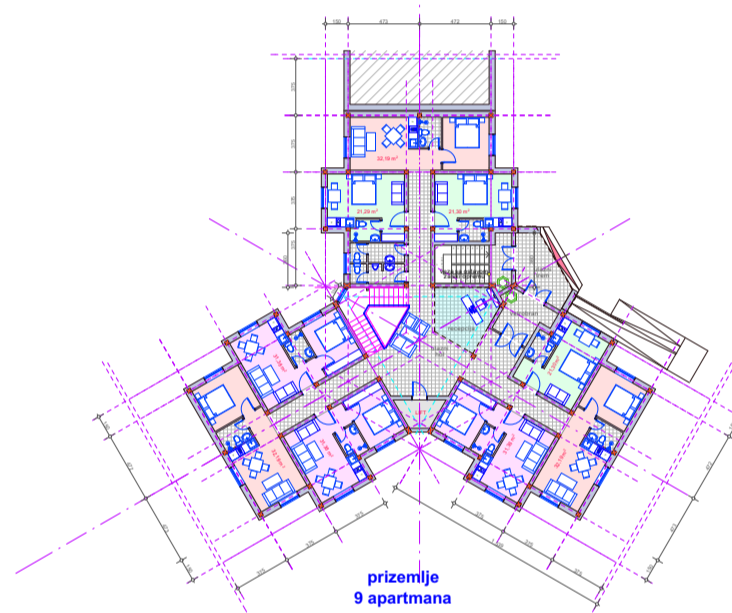
## OBJEKAT "JD-2" (3-3-3) - JELKICA (P+2)

OBJEKAT "JD-2" - JELKICA DUPLA (P+2)



podrum (-1. nivo)  
zajedničke i ekonom.prostorije

OBJEKAT "JD-2" - JELKICA DUPLA (P+2)



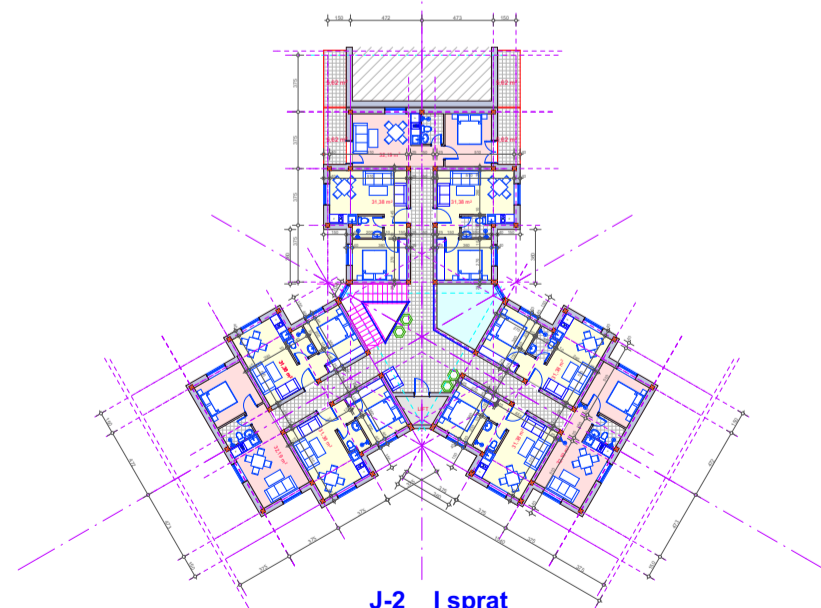
prizemlje  
9 apartmana  
BRGP=477 m<sup>2</sup>

BILANS POVRŠINA: OBJEKAT "J-2" - JELKICA (P+2)

ETAŽA:	POVRŠINA:	BR. APARTMANA:	BR.LEŽAJEVA:
1) podrum (-1. nivo)	(BRGP =597 m <sup>2</sup> )	/	/
2) prizemlje	BRGP=477 m <sup>2</sup>	9 apartmana	18 ležaja
3) I sprat	BRGP=446 m <sup>2</sup>	9 apartmana	18 ležaja
4) II sprat	BRGP=397m <sup>2</sup>	1 apartman	2 ležaja
5) galerija	BRGP=220 m <sup>2</sup>	6 duplex apart.	24 ležaja
UKUPNO:	BRGP=1 540 m <sup>2</sup>	25 apartmana	62 ležaja

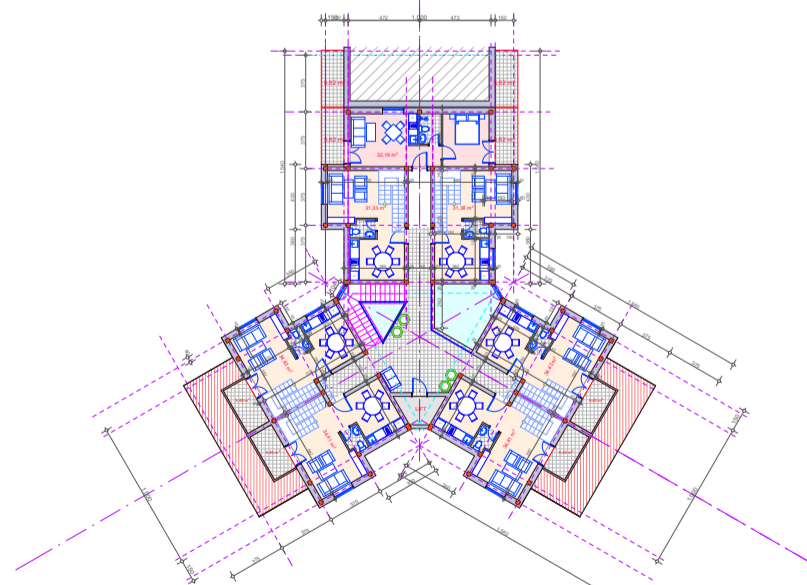
UKUPNO: 1 objekat JD-2

OBJEKAT "JD-2" - JELKICA DUPLA (P+2)



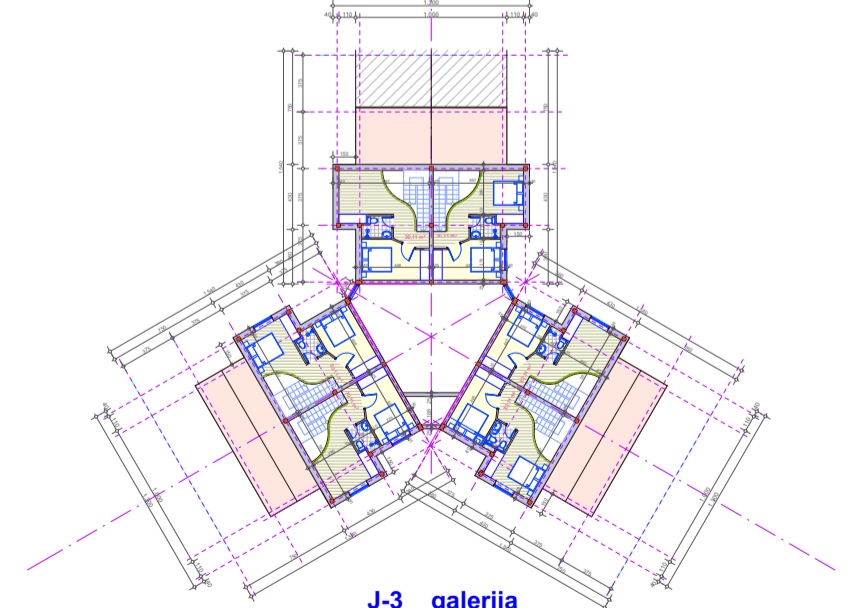
J-2 I sprat  
9 apartmana  
BRGP=446 m<sup>2</sup>

OBJEKAT "JD-2" - JELKICA DUPLA (P+2)



J-2 II sprat  
6 duplex apart  
BRGP=397m<sup>2</sup>

OBJEKAT "JD-2" - JELKICA DUPLA (P+2)



J-3 galerija  
(6 duplex apartmana)  
BRGP=220 m<sup>2</sup>